

 ultimate™

 compact™



telephone
entry



decades of innovation, manufacturing excellence and delivering value to clients

Established in 1989, ISM is an iconic great British brand. Operating from our extensive manufacturing and design facility in Sussex, our global client base encompasses many of the world's most prominent institutions. Leading names hailing from Banking and Finance, Critical Infrastructure, Police, Government, Custodial, Education, Local Authorities, Health and Commercial sectors work with, and recommend ISM.

Our pioneering, robust and incredibly cost effective Ultimate and Compact telephone entry systems provide solutions for housing associations and local authorities looking for robust, easy to maintain and scalable telephone entry systems.

The Compact Series functional telephone entry system is an innovative system that has been developed to meet the specific needs of local authorities and housing associations. It's ideal for low rise residential buildings not least because it is competitively priced, robust, vandal proof and easy to use and maintain. Compact is the perfect complement to ISM's Ultimate digital audio and data telephone entry systems which are designed for medium to high rise apartment buildings.

specialist

"ISM research, design and manufacture at our plant in the UK with our clients' needs at the forefront of our minds. We are renowned for our 'high quality engineering', an approach that benefits our clients. We pack more technology into our systems not only to meet the client's needs but in order to make them reliable, future proof, scalable and easy to maintain."

Steven Card,
Technical Director



Why you need the 'ultimate' in digital telephone entry systems...

Why have so many housing associations and local authorities chosen the Ultimate Digital Telephone entry system over other systems?

Ultimate was initially developed for local authority and housing associations – the result of a painstaking process of listening to what local authorities and housing associations needed, understanding their budgetary restrictions and then designing and manufacturing the solution. Clients in these sectors tell us the value they place on Ultimate's flexibility. Today the requirement may be for one system in one apartment block; in a few years time there may be several blocks. Ultimate is a modular system that can be easily added to. What's more we can cut costs without cutting corners by using as much of a client's existing cabling and cabinets as possible.

"In recent years, the demand for Ultimate has extended into large luxury apartment developments in the private sector. The need to maintain the security of a development and to protect residents from unwanted visitors has never been greater."

Stephen Smith,
Sales & Marketing Director

Whether you have a stand alone or concierge installation with single or multiple entrances, Ultimate will meet your needs – both now and in the future. It has been engineered for maximum durability, is exceptionally easy to install, easy to use and easy to maintain. Ultimate can be configured as a simple single exchange serving one building or multiple exchanges serving a network of buildings controlled by a central concierge software management system using our patented world class Genesys software. For smaller sites the Ultimate intelligent feature phone provides a highly cost effective and efficient porter phone facility.

The wonder of wiring...

The technology underpinning Ultimate includes full Digital Audio using 4 wire (twisted pairs Cat5e or CW1308) to handsets, apartment stations and entrance panels. Voice over IP includes multiple speech paths when the exchanges are networked.

Ultimate is packed with benefits including:

- Handsets and entrance panels are electronically isolated. Acts of vandalism or fault will not affect the remainder of the system.
- Digital exchange. Because the system operates from a digital exchange, all entrance panels including sub landing panel systems have their individual speech channel. This means that all panels to be used at the same time including multiple calls to individual flats – on the same sub landings control systems.
- The Ultimate system is fully compliant to CE, Low Voltage Directive and DDA requirements.

3000/12/6A/CB3 central exchange and power supply benefits...

- Enclosed in powder coated steel cabinet (CB3) dual lockable cabinet IP46 rated with sub chassis for ease of installation and maintenance. Size 550cm x 550cm x 150cm deep.
- Up to 48 channels (handsets and entrance panels) expandable to 96 channels per exchange.
- 6 amp 27 volts DC with auxiliary 12v DC rated at 6 amps (for lock releases).
- 2 – 6 hours (subject to quantity of instruments on each exchange) battery standby. Includes 3 x 3.2Ah 12volt batteries.
- BST self-adjusting trades time clock.
- RS232 port for programming system and diagnostics (programming block name for entrance panels and unique flat numbers and feature handset for concierge or warden control).



- Includes tools programme plus installation and service manuals on CD.
- The exchanges can be linked via an Ethernet VoIP link to build larger systems and to reduce cabling by adding 3000/NET network cards.
- Distributed cable infrastructure is available via simple 'Krone Connector' patch panel cabinets.
- Wire free electronics, as all connections to handsets and entrance panels are via terminal cards. All encoders and CPU cards are plug in modules reducing service time and labour costs, includes as standard a 2 year warranty.
- Global programming for handset nuisance timer (default 12 hours).
- The exchanges can be linked via an Ethernet VoIP link to build larger systems and to reduce cabling by adding 3000/NET network cards.
- Includes tools programme plus installation and service manuals on CD.
- Central exchange reduces maintenance costs as there are no electronics exposed to vandalism or damage on landings or corridors.
- Includes as standard a 2 year warranty.
- Global programming for handset nuisance timer (default 12 hours).

"Having a central exchange reduces maintenance costs, often quite dramatically because the electronics are not exposed to vandalism or damage on landings or corridors."

Grant Jenkins,
ISM

3000/TBSU compact central exchange and power supply benefits

- Compact exchange for 16 devices can be expanded to 32 devices by adding a 3000/16DCT card.
- Cost effective one board design.
- 6 amp 12 volts DC with auxiliary 12v dc rated at 6 amps (for lock releases).
- 2 – 6 hours (subject to quantity of instruments on each exchange) battery standby.
- BST self-adjusting trades time clock.
- RS232 port for programming system and diagnostics (programming block name for entrance panels and unique flat numbers and feature handset for concierge or warden control).

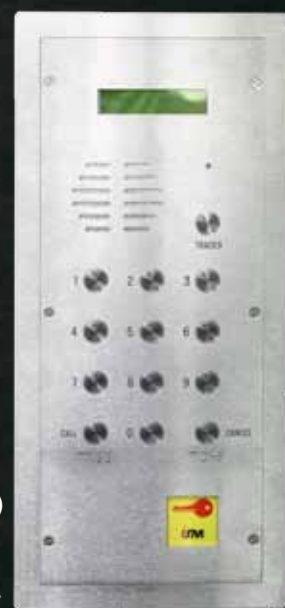


3000/NET Network Card

Network cards enable Ethernet connection between exchanges either locally or remotely utilising LAN or WAN networks. These connections can be hard wired, Wi-Fi, Fibre or part of a client's network infrastructure. When hard wired, Ethernet extenders can be used for distances in excess of 100 meters. Each network card includes one audio channel. Adding additional cards enables multiple speech paths between exchanges and provides network redundancy.

3000/BEP, BE and V range of entrance panels

Engineered to be tough and durable, the Ultimate 3000 digital panel will withstand harsh treatments day after day, year after year. But toughness does not come at the cost of ease of use, something that our clients (and their residents or clients appreciate too). The installation wiring is a simple 4 wire (twisted pairs Cat5e or CW1308) plus the lock supply. The entrance panel has a dynamic 40 character 2 line text display which includes interactive text instructions. There is also the option of including the name of the building in 6mm high characters.



3000/BE

The panel is laser cut, constructed in BS316 marine grade stainless steel. It includes options for 'Trades' and 'Concierge Call' buttons. The panels are available with an RNIB approved 4 x 4 numeric vandal resistant keypad or with 18mm flush or collar stainless steel buttons (also available with illuminated button option).



3000/BEP

The panels have a stainless steel bezel galvanised back box (sizes BEP, BE, and P 450mm high x 214mm x wide 65mm deep).

Other features include:

- Optional access control reader and 4mm Lexan window.
- Optional Braille instructions.
- Duplex digital audio.
- Optional high resolution Colour camera and 4mm Lexan window for video systems.
- Optional additional alpha 4x4 keypad.
- Terminations for fire switch, exit buttons, access control readers and voltage free relays for lock releases or, auxiliary equipment such as powered doors.

3000/NIDT Audio handset

The Ultimate handsets are ergonomically designed, robust and easy to use. They are manufactured in cream ABS, again to a high standard.

Benefits include:

- 'Nuisance' and 'door open' LED flush mounted and protected with an ABS 'lens lock' release button.
- Electronic call tones for the main entrance panel, concierge reception and



sub landings (each with two tones to verify the location of the call) adjustable three ring volumes within each handset.

- Two inputs for monitoring items such as intruder alarms, fire alarms and pull cords for disabled residents when connected to a concierge system.
- Door open LED.
- Silk screen icons to identify door open, privacy, concierge call and lock release buttons.
- Size 85mm(wide) x 223mm(high) x 65mm(deep).
- Nuisance timer.

Options include:

- A concierge call button.
- An induction loop for hard of hearing.
- An extension sounder.
- A strobe light for those with impaired hearing.
- An extension handset.

3000 video monitor module

The Ultimate colour TFT-LCD monitor complements the Ultimate digital audio telephone entry and Intercom system. It has a high specification as follows:



- The case is manufactured in powder coated aluminium, folded and welded for maximum strength and durability.
- The 4 inch Active Matrix LCD monitor is protected with a 1.5mm Polycarbonate cover.
- Low power consumption 200ma at 12vdc.
- Composite regulated video input signal PAL or NTSC input signal.
- High Quality Image (234 x480).
- Illuminated Preview button which enables the user to manually select images from the entrance panels and remote cameras (via video sequential switcher).
- The case includes knock outs for cable entry from each side and rear entry for ease of installation.
- It simply plugs into the audio handset via ribbon cable (Audio handsets models 3000/NIDT/V, 2404/NIDT/V* and 2450/NIDT/V*).

Options include:

- 'Co-Axial free' – this is ideal for new installations because it reduces installation and containment costs or when upgrading the existing audio system to Colour Video using the 3000/VMN colour monitor with 3000/NV4, 8 or 16 video isolation distribution cards. The cable requirements are a 3 pair CW1308 or Cat 5e cable. Audio handsets are also available with a concierge call button.

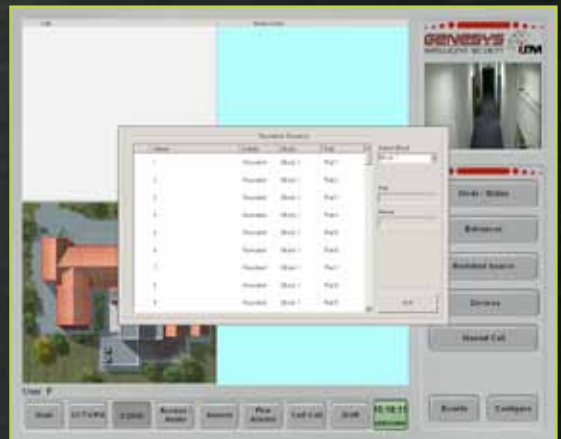
Concierge

Ultimate can be connected to ISM's patented, world class Genesys Security Control Room Management software. This offers concierge control and full access to integration of CCTV, digital recording, fire, intruder alarms etc. The concierge software offers full IP networking capabilities of concierge workstations and Ultimate 3000 audio and data hardware. This provides a flexible (and unique) solution for clients seeking to control the security of their building locally or via their central control suite over a LAN or WAN network.



- An Ultimate feature handset is provided at each workstation allowing the operator to communicate with both visitors and residents. The handset can also be used as a self-contained concierge system for the smaller sites including single concierge controlled buildings – without the need for the software based solution.
- The feature phone handset is an intelligent unit with a 2 line LCD text display. Each call is displayed with the location, including the apartment numbers that have been called by a visitor and the residents calling the concierge staff. This makes it ideal for single apartment blocks and warden controlled systems.

For full information on the concierge software please ask for a copy of our Genesys brochure



The concierge module embraces all the functionality required by housing associations and local authorities including:

- Displaying graphical site location of buildings. Text screens display call queues that include details of location, dwelling and resident details.
- The graphical user interface provides a separate area for displaying alarms and the status of residential blocks. A video window displays CCTV entrance panel cameras images when a call is generated from an entrance panel.

"Because Ultimate is a long life, low maintenance, durable system, it is very cost effective."

John Waite
ISM

compact

Why is Compact the first choice for housing associations and local authorities?

"Why choose Compact? We have harnessed 22 years of experience of working within the housing sector, with local authorities, housing associations, landlords and installers to develop Compact. If you work with or for a local authority or housing association and you need a telephone entry system, Compact has been designed to meet your precise needs."

Grant Jenkins
Sales Executive

"Compact uses the latest technology, it is simple, extremely flexible, easy to install and maintain. It offers an audio quality and functionality that just can't be matched by any other system."

Steven Card,
Technical Director ISM

The Compact Series Functional Analogue Door Entry System offers a high specification that meets and exceeds the most rigorous of requirements. Compact is robust, reliable *and* competitively priced with quality and functionality at its very heart.

"The system has a powerful CPU, offering the most advanced digital technology with analogue audio. It has been designed to make installation as simple as possible and the cost of installation and ongoing maintenance as little as possible."

Stephen Smith,
Sales and Marketing Director ISM

The system cable requirements are a 3 pair cw1308 or cat 5e to handsets and entrance panels (plus lock release power for entrance panel). The system also includes diagnostics that indicate the status of faults via the LCD BST time clock display using Electronic Fault Text Indication Technology (EFTI).

Some of Compact's advanced features that are included as standard

- Full duplex speech.
- Privacy of speech.
- Electronic timed call tone.
- Full electronic auto isolation.
- Electronic audio amp with low, medium and high setting.
- Discreet locking facility.
- 7 day BST Trades time clock .
- Adjustable 5-30 second lock release timer, incremented in 5 second steps.
- Adjustable 10-60 second call time, incremented in 10 second steps.
- Adjustable 10-60 second speech timer, incremented in 10 second steps.
- 12 volt DC, 3 amp switch mode power supply with integral battery charger.
- Enclosed within a steel powder coated IP54 cabinet.
- Fully compliant with CE and low voltage directives.
- Modular design for ease of maintenance.
- 8 channels expandable to 16 e.g. Up to 15 flats with 1 entrance call panel or, up to 14 flats with two entrance call panels.
- Prewired output from power supply for Proximity access control controllers and chassis mounting studs for PAC and KMS systems.
- Privacy call timer for handsets 4, 8, 12 or permanently on/off.
- Individual handset call volume adjustment.
- Door open indication.
- Simplified 6 wire CW1308 or Cat5 cable for entrance panels and audio handsets.
- Standard 3 year guarantee.

The Compact System uses ISM's standard COM/ NIDT handsets for audio only systems or COM/ NIDTV for video systems using the COM/VM 4" colour monitor module that fits adjacent to the standard handset.

- The audio handset includes a 'lock release' button, a 'privacy switch' indicator and a 'door open' indicator.
- Colour video monitor includes a 'Preview' button to enable the user to view cameras(s) manually when required.
- The monitors are extremely robust and vandal resistant, manufactured in powder coated aluminium folded and welded for strength with a Lexan window to protect the colour monitor.

Power Supplies

The Compact System is powered by an intelligent digital CPU with analogue audio and includes the following features:

- 3 amp 12v DC switch mode power supply with auxiliary output for proximity controllers and lock releases including charging facilities for standby batteries.
- It is supplied with either an 8 channel CPU (expandable to 16 channels) or 16 channels. This enables up to 15 dwellings and 1 entrance panel, or up to 14 flats and 2 entrance panels on the System.
- LCD 7 day BST trades time clock which plugs into the motherboard.
- Electronic Fault Text Indication (EFTI). This displays in text format via the BST time clock LCD display when a dwelling handset is in fault condition. The flat and channel will be displayed when a handset has been electronically isolated because of vandalism to the cable or handset connections.
- Outputs for fail open or fail locked, DC lock releases.
- Only one flat can be called at any one time significantly reducing the potential for nuisance calls.
- Power and fault LED(s).
- Electronic isolation for individual dwelling handsets.
- Programmable link for entrance panel functions
- Cabinets are manufactured in 2mm powdered coated steel with a single lock. The lift and tilt door is removable for ease of installation and accessibility.



Product codes

COM/P1

8 channel PSU with BST time clock

Cabinet size: 400mm high x 295mm wide x 100mm deep with 1 lock IP54 rated

COM/P2

16 channel PSU with BST time clock

Cabinet size: 400mm high x 295mm wide x 100mm deep with 1 lock IP54 rated

COM/P3

8 channel PSU with BST time clock with additional space for access controller for KMS or PAC

Cabinet size: 530mm high x 295mm wide x 100mm deep with 1 lock IP54 rated

COM/P4

16 channel PSU with BST time clock with additional space for access controller for KMS or PAC

Cabinet size: 530mm high x 295mm wide x 100mm deep with 1 lock IP54 rated

Options

IP64 cabinet's product codes COM/P5 and 6

When using video systems, additional cabinets may be required for video 4555/A 4 way distribution amps and NVT twisted pair video modules

Compact handsets

The Compact Series handsets are ergonomically designed and so are easy to hold and use. They are manufactured in cream ABS to an exceptionally high standard.

They include the following features:

- Nuisance and door open LED, flush mounted with a clear lens cover.
- Electronic call tone which is adjustable to low, normal, medium and high.
- Silk screen icons identify 'door open', 'privacy' and 'lock release' buttons.
- Nuisance timer 4, 8, 12 hour and permanent ON/OFF.

Product code COM/NIDT

Additional options

- Induction loop for hard of hearing.
- Extension buzzers or loud speakers.
- Strobe lights.

Colour video monitor module

- Illuminated preview button which is available with isolated video input for use with a CW1308 (5 pair) or, Cat5e twisted pair to enhance video signal or, a standard 3 pair CW1308 with RG 59 co -axial.
- 4 way video amps to enhance composite co-axial video signal.
- Simply plugs into standard COM/NIDTV series handsets including pre-wired interconnection ribbon cable.
- The case includes cable knockout entries at the rear and side for ease of installation.
- 100mm active matrix, low power consumption. 100mm LCD display, protected with Lexan window.
- Consumption 200mA 12vDC supply.
- The case is manufactured in powder coated aluminum for durability and a long life.

Product codes:

Handset COM/NIDTV

Monitor COM/MM

Functional Entrance Panels

The COM/A-G model entrance panels are manufactured in 2.5mm polished BS316 stainless steel, with bezel and galvanized back box. They include up to 2mm x 8mm characters, deep black infill engraving and yellow engraved rings. Each Flat button complies with the requirements of the Disability Discrimination Act.



The entrance panels also have the following features:

- DDA compliant with a 'Proximity access' reader window to facilitate PAC or KMS readers.
- 18mm stainless steel low travel buttons.
- Trades button.
- Laser cut panels for high quality construction and finish.
- Programmable lock release, talk time, call time and global privacy settings.
- Easy connections for lock release, exit buttons, fireman switch and door monitoring.
- Electronic annunciation tones for call and lock release.
- Choice of audio volumes: low, standard, medium high, high.

Additional options

- Braille instructions.
- Braille call button numbers ID(s).
- 'Door open' and 'system engaged' indicators.
- Engraved user instructions.
- Plain grain panels without bezel.
- Video Lexan window including colour camera.

System Accessories

- Fireman drop key switch.
- Override and emergency exit buttons.
- Door alarm sounders.

Please get in touch with us to discuss your requirements. If you would like to arrange a demonstration of Compact or simply require further information, our experienced team is here to help you.



1001/ORT2

accessories

Fireman's Override Switches

Manufactured in BS316 grade stainless steel with or without a bezel edge of the flush back box

Available for use with Express, Jackson or crescent shaped Fireman's keys.



1001/FS

Double pole high quality switch to trigger the door release timer whilst separately removing power from the lock release.

Push To Exit Buttons

ISM manufactures a variety of push to exit buttons. All faceplates are manufactured in BS316 grade stainless steel and utilise high impact stainless steel buttons. The standard versions available are as follows:

- 1001/OR single button 18mm in diameter with change over contacts to allow for the power to be physically removed from the lock whilst triggering the exit timer making the button intrinsically safe – available in surface or flush versions (1001/OR/F).
- 1001/ORT as 1001/OR but with 0-30 second timer card to release the door for the set duration – available in surface or flush versions(1001/ORT/F).
- 1001/ORT2 Dual push button with 0-30 second timer card to release the door for the set duration. With "Push to Exit" and "Emergency Exit" engraved to denote the button operation – flush version with bezel edged back box.
- 1001/OR3 Surface version of the 1001/OR with 25mm button 1001/OR3/F is the flush mount version.



1001/OR



1001/OR3

Extension Sounders

Extension sounders are available and can be connected to the telephone handset to increase the call tone within localised areas for residents with impaired hearing.



1001/ES

Strobe Lights

Strobe lights for the hard of hearing can be installed within the apartment and will flash when a call has been generated. The master strobe unit comes with a timed strobe trigger module which allows the strobes to flash for a set period of time. Up to 2 slave strobes can be installed within the same residence. This trigger module can be utilised to integrate with a Mountcastle unit to flash the apartment lights.

Extension Handsets

Extension handset(s) can be installed within each dwelling.





INTERGRATED SECURITY MANUFACTURING LTD

25-29 The Bell Centre | Newton Road | Crawley | West Sussex RH10 9FZ

TEL +44(0) 1293 529990 **FAX** +44(0) 1293 528023 **E-MAIL** info@ism-uk.com **WEB** www.ism-uk.com